

# Assessing student learning opportunities in Community Development in Ireland



# Introduction

*Assessing student learning opportunities in Community Development in Ireland* is an independent research study commissioned by Combat Poverty in 2005. The study established a baseline of learning opportunities in courses in the higher education sector in Ireland and examined the opportunities for policy learning for students.

In the course of the study many Community Development courses were identified, as well as a strong demand from potential students to enter such courses on a full-time or part-time basis. However, there was no single source of information that potential students could consult to find a Community Development course to meet their specific requirements. The study recommended the publication of a directory of Community Development courses offered by third-level institutions so that potential students could compare the learning opportunities available in and between universities and institutes of technology.<sup>1</sup>

The directory identifies a large range of courses. Some are degree programmes that would, upon completion, allow students to advance further or transfer to other courses in higher education. Some are programmes of study located, for example, in adult education departments. Some offer learning opportunities outside of degree-level programmes. Page fourteen of the directory contains the 10-Level National Framework of Qualifications as devised by the National Qualifications Authority of Ireland (NQAI).

The information contained in this directory was gathered during 2006 and updated during July 2006. The directory is accurate as per that point in time based on information supplied by the third-level institutions.

The presence of a course of study in the directory does not imply any specific or general approval of that course by the Combat Poverty Agency.

Ralaheen Ltd  
September 2006

<sup>1</sup> The Directory was compiled by Ralaheen Ltd.

## NUI Certificate Courses

Course Title	Certificate in Community Development and Leadership	Certificate in Community Development
College/Institution	National University of Ireland, Maynooth	University College Cork
Contact Details	Department of Adult and Community Education Tel: (01) 708 4500 www.nuim.ie	Centre for Adult and Continuing Education Tel: (021) 490 4737 www.ucc.ie
Awarding Body	NUI	NUI
Entry Requirements	<ul style="list-style-type: none"> <li>– Must be over twenty-three and be community activists, preferably working with groups in a facilitation or leadership role</li> <li>– Capacity to complete NUI certificate level course</li> </ul>	<ul style="list-style-type: none"> <li>– All adults over twenty-one with an interest in the area, irrespective of their previous educational attainment</li> </ul>
Fee	€995–1,150 per year (depending on outreach centre attended)	€600 per year
Location	Various locations	UCC
Duration	One year	One year
Format	Part-time	Part-time: one evening per week
Number of Places	Usually around eighteen per outreach centre	Minimum of twenty
Supervised Placement	No	No
Assessment	Continuous assessment	Continuous assessment, no examinations

## FETAC/NUI Certificate

Course Title	Certificate in Youth and Community Work
College/Institution	Liberties College, Dublin
Contact Details	Department of Health Care and Community Care Tel: (01) 454 0044 www.libertiescollege.ie
Awarding Body	FETAC For students over twenty-three or those who meet matriculation requirements – NUI Certificate in Youth Studies
Entry Requirements	<ul style="list-style-type: none"> <li>– At least ten hours' experience in youth work</li> <li>– Three passes at Leaving Certificate or other relevant experience</li> </ul>
Fee	Free fees apply, additional payment to NUI for qualifying candidates
Location	Liberties College
Duration	Two years
Format	Full-time
Number of Places	Thirty
Supervised Placement	Yes
Assessment	Continuous assessment and examinations

## HETAC Level 6 Higher Certificates

Course Title	Higher Certificate in Arts in Community Education and Development	Higher Certificate in Arts in Community Studies
College/Institution	Cork Institute of Technology (CIT)	Dundalk Institute of Technology
Contact Details	Department of Education Development, School of Humanities Tel: (021) 432 6100 www.cit.ie	Lifelong Learning Centre Tel: (042) 937 0586 www.dkit.ie
Awarding Body	HETAC	HETAC
Entry Requirements	– Two years' experience – No educational requirements for mature applicants	– Two years' experience – No formal entry standards have been set
Fee	Free fees apply	€1,800 per year
Location	CIT with some community-based tutorials	Dundalk IT
Duration	Two years	Two years
Format	Full-time	Part-time
Number of Places	Approx. twenty	Twenty-five
Supervised Placement	Yes	No
Assessment	Continuous assessment, no examinations	Continuous assessment and examinations

## HETAC Level 6 Higher Certificates

Course Title	Higher Certificate in Youth Studies	Higher Certificate in Arts in Community Studies
College/Institution	Dundalk Institute of Technology and City of Dublin Youth Services Board (CDYSB)	Letterkenny Institute of Technology
Contact Details	Youth Work Degree Course c/o Larkin College Tel: (01) 872 8298 www.dkit.ie	Continuing Education Programme Tel: (074) 918 6720 www.lyit.ie
Awarding Body	HETAC	HETAC
Entry Requirements	<ul style="list-style-type: none"> <li>– Over twenty-three with at least two years' experience in youth work; in some cases the college will consider younger candidates who meet the other requirements</li> <li>– Permission and support from employer</li> <li>– Literacy skills and basic computing skills</li> </ul>	– Leaving Certificate or over twenty-three years of age
Fee	€2,050 per year (subject to change); the course is supported and subsidised by the CDVEC with funding coming through CDYSB	€750 per year
Location	Courses take place in Larkin College, Dublin 1, and Dundalk Institute of Technology	Letterkenny IT
Duration	Two years	Two years
Format	Part-time	Part-time
Number of Places	Twenty-four	Forty
Supervised Placement	Yes, as well as placement in student's own project	No
Assessment	Mainly continuous assessment with some examinations	Continuous assessment and examinations

Course Title	Higher Certificate in Community Education and Development
College/Institution	Waterford Institute of Technology
Contact Details	Adult and Continuing Education Tel: (051) 302 721 www2.wit.ie
Awarding Body	HETAC
Entry Requirements	– Must be involved in community education, community development or related work
Fee	€310 per module
Location	Community based
Duration	Two years – six modules per year or as negotiated
Format	Part-time
Number of Places	Eighteen
Supervised Placement	Yes
Assessment	Creative assessment methods to encourage the sharing of learning throughout the course

## NUI Diploma Courses

Course Title	Diploma in Youth and Community Work	Diploma of Community Development
College/Institution	University College Cork	University College Cork
Contact Details	Centre for Adult and Continuing Education Tel: (021) 490 4705 www.ucc.ie	Centre for Adult and Continuing Education Tel: (021) 490 4737 www.ucc.ie
Awarding Body	NUI	NUI
Entry Requirements	– Twenty-one years or older, no special educational requirements	– Year 1 (Certificate) is available to all adults aged twenty-one years or older and there are no special educational requirements – Year 2 is open to those who have successfully completed the Certificate in Community Development
Fee	€600 per year (subject to change)	€600 per year
Location	Various locations	UCC
Duration	Two years	Two years
Format	Part-time	Part-time
Number of Places	Minimum of twenty	Minimum of twenty
Supervised Placement	Yes (minimum of fifty hours in second year)	Yes
Assessment	Continuous assessment	Continuous assessment and examinations

## NUI Diploma Courses

<b>Course Title</b>	<b>Diploma in Community Development Practice</b>	<b>Diploma in Applied Theology and Community Development</b>
College/Institution	National University of Ireland, Galway	National University of Ireland, Galway and Western Theological Institute
Contact Details	Community Education Centre Tel: (091) 495 241 www.nuigalway.ie	Western Theological Institute Tel: (091) 581 711 www.theologywest.ie
Awarding Body	NUI	NUI
Entry Requirements	<ul style="list-style-type: none"> <li>– Experience of working in a community or voluntary organisation</li> <li>– No special educational requirements</li> </ul>	– Admission on the basis of completed application form and interview
Fee	€300 per year (subject to yearly review)	€800 per year (subject to review)
Location	NUIG and various field trips to community development projects	Number of venues used which change according to demand
Duration	One year	Two years
Format	Part-time	Part-time
Number of Places	Twenty-five	Thirty
Supervised Placement	No	Not available
Assessment	Continuous assessment, no examinations	Attendance at the course, group participation, written and oral assignments and evaluation of project and fieldwork

## NUI Diploma Courses

Course Title	Diploma in Rural Development	Diploma in Arts (Local and Community Studies)
College/Institution	NUIG/NUIM/UCD/UCC	National University of Ireland, Maynooth
Contact Details	NUIG, Department of Economics, Tel: (091) 524 411 NUIM, Centre for Adult and Community Education, Tel: (01) 708 3590 UCD, Faculty of Agriculture, Tel: (01) 716 7096 UCC, Centre for Co-operative Studies Tel: (021) 490 3355	Department of Adult and Community Education Tel (01) 708 4587 www.nuim.ie
Awarding Body	NUI	NUI
Entry Requirements	– Twenty-three years or over with experience or under twenty-three through CAO	– Mature student (twenty-three +) – No educational requirements
Fee	To be confirmed	€339 per five-credit module (subject to change)
Location	Distance learning	NUIM and Kilkenny Campus
Duration	Two years	Part of four-year degree Diploma awarded on completion of ninety credits
Format	Part-time	Modular, evening, part-time
Number of Places	Not applicable	No limit
Supervised Placement	No	No
Assessment	Continuous assessment, no examinations	Modular assessment by assignments, project work, written examinations and presentations

## NUI Diploma Courses

<b>Course Title</b>	<b>Diploma in Community and Youth Work</b>
College/Institution	National University of Ireland, Maynooth
Contact Details	Department of Applied Social Studies Tel: (01) 628 5222 www.nuim.ie
Awarding Body	NUI
Entry Requirements	– CAO requirements unless over twenty-three with at least two years' relevant experience
Fee	Free fees apply for full-time Part-time €3,781 for Year 1, €3,263 Year 2 and €2,758 Year 3 (subject to increase)
Location	NUIM and fieldwork visits
Duration	Two years or three years (depending on format)
Format	Full-time (two years) Part-time (three years) or Part-time in service (three years)
Number of Places	Depends on demand
Supervised Placement	Yes
Assessment	Continuous assessment and examinations

## NUI Primary Degrees

<b>Course Title</b>	<b>BSoc Sc (Youth and Community Work)</b>	<b>BSc in Rural Development</b>
College/Institution	University College Cork	NUIG/NUIM/UCD/UCC
Contact Details	Applied Social Studies Tel: (021) 490 2450 www.ucc.ie	NUIG, Department of Economics, Tel: (091) 524 411 NUIM, Centre for Adult and Community Education, Tel: (01) 708 3590 UCD, Faculty of Agriculture, Tel: (01) 716 7096 UCC, Centre for Co-operative Studies, Tel: (021) 490 3355
Awarding Body	NUI	NUI
Entry Requirements	– Mature students only (twenty-three +), at least one year's experience and a suitable access course is desirable – Applications made through CAO	– Applicants must have at least two years' experience in rural development in either a voluntary or professional capacity
Fee	Free fees	To be confirmed
Location	UCC	Distance Learning
Duration	Three years	Four years
Format	Full-time	Part-time
Number of Places	Twenty to twenty-five	Not applicable
Supervised Placement	Yes	No
Assessment	Continuous assessment and examinations	Continuous assessment and end of year exams

## NUI Primary Degrees

<b>Course Title</b>	<b>BA in Local Studies BA in Community Studies</b>	<b>BA in Community and Family Studies</b>
College/Institution	National University of Ireland, Maynooth	National University of Ireland, Galway
Contact Details	Department of Adult and Community Education Tel: (01) 708 4587 www.nuim.ie	Community Education Centre Tel: (091) 495 472 www.nuigalway.ie
Awarding Body	NUI	NUI
Entry Requirements	<ul style="list-style-type: none"> <li>– Mature students (twenty-three +)</li> <li>– No educational requirements</li> </ul>	<ul style="list-style-type: none"> <li>– Experience of working in a community or voluntary organisation</li> <li>– No special educational requirements</li> <li>– Applicants for the programme should meet the university's requirements for mature students</li> </ul>
Fee	€339 per five-credit module (subject to change)	€2,900 per year
Location	NUIM and Kilkenny Campus	NUI, Galway campus plus three other outreach locations
Duration	Four years	Four years
Format	Modular, evening, part-time	Part-time distance learning
Number of Places	No limit	Twenty-five to thirty per venue
Supervised Placement	No	No
Assessment	Modular assessment by assignments, project work, written examinations and presentations	Assignment per module plus examinations

## HETAC Level 8 Primary Degrees

Course Title	BA in Community Development	BA in Youth Work
College/Institution	Dundalk Institute of Technology	Dundalk Institute of Technology and City of Dublin Youth Services Board (CDYSB)
Contact Details	Lifelong Learning Centre Tel: (042) 937 0586 www.dkit.ie	Youth Work Degree Course c/o Larkin College Tel: (01) 872 8298 or 087 910 1733 www.dkit.ie
Awarding Body	HETAC	HETAC
Entry Requirements	– Higher/National Certificate in Community Development or equivalent	– Higher Certificate in Youth Studies or equivalent
Fee	€1,950 per year	€2,050 per year (subject to change); the course is supported and subsidised by the CDVEC with funding coming through CDYSB
Location	Dundalk IT	Larkin College, Dublin 1
Duration	Two years	Two years (students must also have completed a two-year Higher Certificate in Youth Studies or equivalent)
Format	Part-time	Part-time
Number of Places	Twenty-five	Twenty-five
Supervised Placement	No	Yes
Assessment	Continuous assessment and examinations	Mainly continuous assessment with some examinations

Course Title	BA in Community Development	BA in Rural Development
College/Institution	Letterkenny IT	Tipperary Institute
Contact Details	Continuing Education Programme Tel: (074) 918 6720 www.lyit.ie	Rural Development Department Tel: (0504) 28252 www.tippinst.ie
Awarding Body	HETAC	HETAC
Entry Requirements	– Higher Certificate in Community Studies or equivalent	– Minimum five passes at Leaving Cert, including Maths and English/Irish
Fee	€1,200 per year	Free fees
Location	Letterkenny IT	Tipperary Institute, Thurles campus
Duration	Two years	Three years with optional one-year add-on for honours degree
Format	Part-time	Full-time
Number of Places	Twenty-five	Not available
Supervised Placement	No	Yes
Assessment	Continuous assessment and examinations	Not available

## HETAC Level 8 Primary Degrees

<b>Course Title</b>	<b>BA in Community Education and Development</b>
College/Institution	Cork Institute of Technology
Contact Details	Department of Education Development, School of Humanities Tel: (021) 432 6100 www.cit.ie
Awarding Body	HETAC
Entry Requirements	– Higher Certificate in Community Education and Development and a specific level of academic performance – Applicants with equivalent qualifications will be considered
Fee	Free fees apply
Location	CIT and community-based tutorials
Duration	One year as an add-on to the Higher Certificate in Community Education and Development or its equivalent
Format	Full-time
Number of Places	Approx. twenty
Supervised Placement	Yes
Assessment	Continuous assessment, no examinations

## NUI Masters Degrees

<b>Course Title</b>	<b>MA in Community Development</b>	<b>MAgr Sc/MSc (Agr)/Higher Diploma Rural Development</b>
College/Institution	National University of Ireland, Galway	University College Dublin
Contact Details	Department of Political Science and Sociology Tel: (091) 492 290 www.nuigalway.ie	Rural Development Programme, UCD School of Biology and Environmental Science Tel: (01) 716 7096 www.ucd.ie
Awarding Body	NUI	NUI
Entry Requirements	– At least second class honours, Grade 2 degree in a social science or related discipline or equivalent	– Primary degree with honours
Fee	€4,240 per year (subject to change)	€5,470 per year (subject to change)
Location	NUIG and Netherlands	UCD
Duration	Two years	One year
Format	Full-time	Full-time
Number of Places	Fourteen	Approx. twenty-five
Supervised Placement	Yes	No
Assessment	Continuous assessment and examinations	Assignments, examinations and a thesis/dissertation

# NUI Higher Diplomas

<b>Course Title</b>	<b>Higher Diploma in Community Work</b>
College/Institution	National University of Ireland, Maynooth
Contact Details	Applied Social Studies Tel: (01) 708 3743 www.nuim.ie
Awarding Body	NUI
Entry Requirements	– Degree – Experience in sector
Fee	€4,594 per year (full-time) €2,124 per year (part-time) – subject to increase
Location	NUIM and study visits
Duration	One year or two years (depending on format)
Format	Full-time (one year) Part-time or Part-time in service (two years)
Number of Places	Depends on demand
Supervised Placement	Yes
Assessment	Combination of essays, oral and written examinations, presentations and practical assignments



## AWARDS IN THE FRAMEWORK

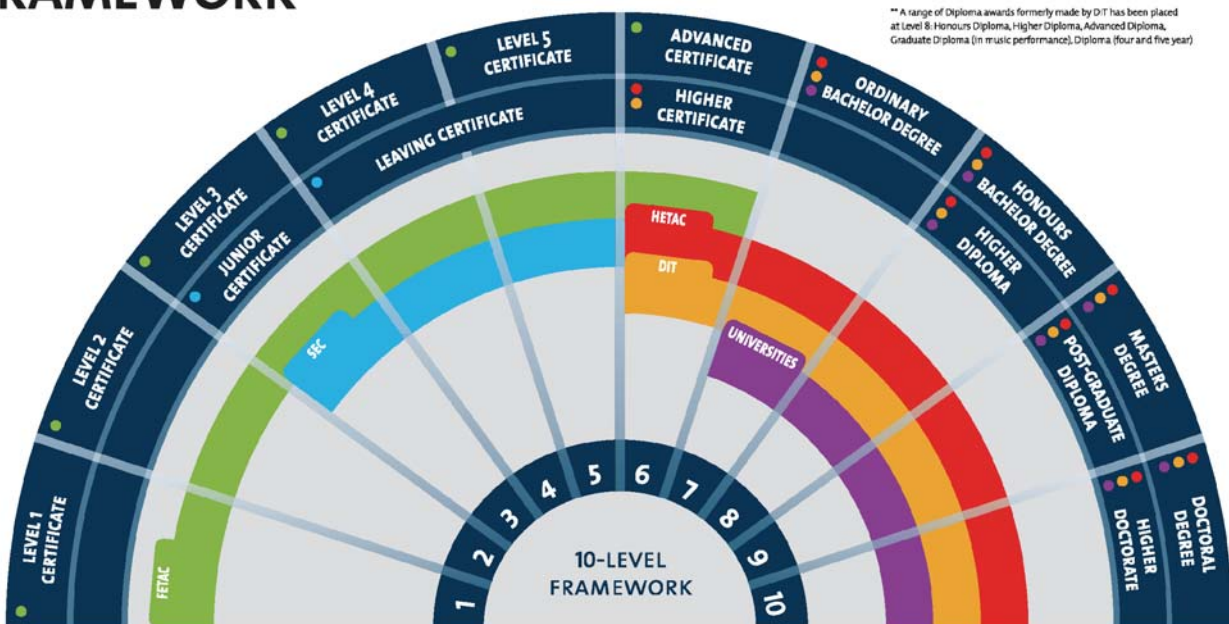
### KEY

- FETAC - Further Education and Training Awards Council
- SEC - State Examinations Commission (Department of Education & Skills)
- HETAC - Higher Education and Training Awards Council
- DIT - Dublin Institute of Technology
- Universities

### new Framework awards

\* While the National Craft Certificate has been placed as a set at level 6, there are level 7 outcomes associated with awards in the set. This placement does not preclude the possibility of existing National Craft Certificate programmes being validated at level 7.

\*\* A range of Diploma awards formerly made by DIT has been placed at Level 8: Honours Diploma, Higher Diploma, Advanced Diploma, Graduate Diploma (in music performance), Diploma (four and five year)



Source: National Qualifications Authority of Ireland.



While every effort has been made to ensure that the information contained in the supplement is accurate, no legal responsibility is accepted by the author or Combat Poverty for any errors or omissions. The views expressed in this publication are the author's own and not necessarily those of Combat Poverty Agency.

Combat Poverty is pleased to acknowledge the work of Ralaheen Ltd in compiling this course listing.

September 2006





**Bridgewater Centre, Conyngham Road**

**Islandbridge Dublin 8**

**Tel: 01 670 6746 Fax: 01 670 6760 Email: [info@cpa.ie](mailto:info@cpa.ie)**

**Website: [www.combatpoverty.ie](http://www.combatpoverty.ie)**