



## OUTCOME OF MSI PROJECT:

- Developed evaluation methodology (including survey questionnaire)
- Tested questionnaire in five partner countries and in EAPN national affiliate organisations during 2005:
- Focus on:
  - Political Leadership
  - Administrative Leadership
  - Specialists / Skills
  - Structures
  - Data / Research
  - Resources
  - Consultation and participation



## QUESTIONS TO BE ADDRESSED:

- *To what extent is social inclusion mainstreamed into public policies?*
- *To what extent are stakeholders involved in the mainstreaming process?*
- *Has it have an impact on the policy process and outcomes?*



## EVALUATING MSI - 2006

- Should tell us
  - Quantitative extent of mainstreaming
  - Understanding of mainstreaming
  - Examples of mainstreaming
- Potential to
  - Develop a mainstreaming scale (*MSI Scale*)
  - Link to levels of poverty over time
  - Start of a process?



## Evaluation Methodology

- The study was in three parts :
  1. Quantitative survey, using the evaluation questionnaire
  2. Series of qualitative interviews with selected respondents to the survey, based on an agreed interview guide (96 in total)
  3. 'Good practice' case studies from each participating country (8 case studies)



## Methodology

- Quantitative survey – 1198 target responses from nine partner countries:
  - Selected ministries and government agencies
  - Administrative regions (in those countries where regions have a devolved policy-making function)
  - Local authorities/municipalities
  - Trade union and employer organisations
  - NGOs working with people experiencing poverty and social exclusion
  - Other civil society organisations relevant to social inclusion



## Main Findings – Health Warning!!

- Total sample of 701
- Regional sample of 367
- Variations across countries
- Variations across units of enquiry
- Low number of responses from social partners
- Poor response from Slovak Republic

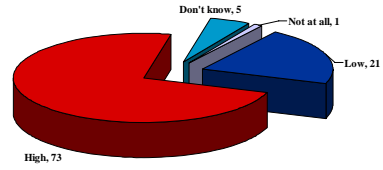


### Number of responses per country

	Bulgaria	Czech Rep	France	Ireland	NL	Norway	Portugal	Slovak Rep	UK	Total
Target no. of responses	124	124	174	99	131	99	124	99	224	1198
Actual no. of responses	123	126	71	91	35	44	79	15	117	701
%	99	100	41	92	27	44	64	15	52	58.5

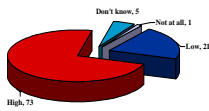


### Understanding of Definition of Mainstreaming Social Inclusion:

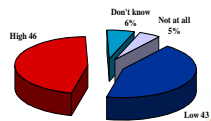


### Definition of MSI

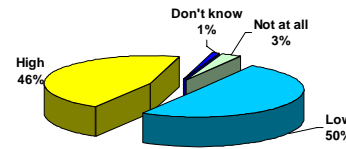
#### Understanding of Definition



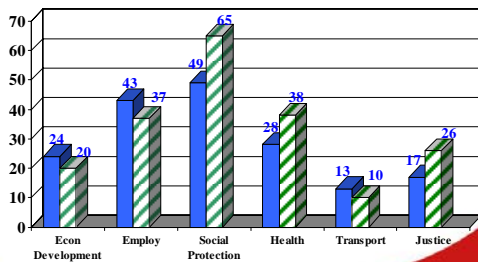
#### Relevance of Definition



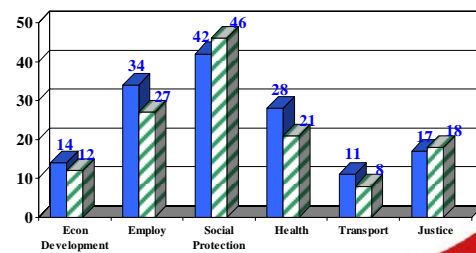
### Reductions in poverty and social exclusion are high on the government agenda:

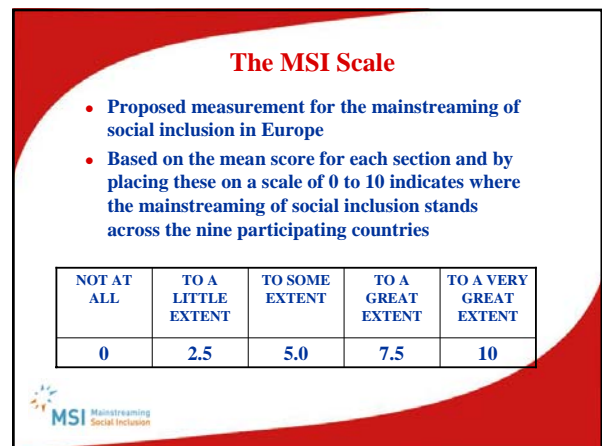
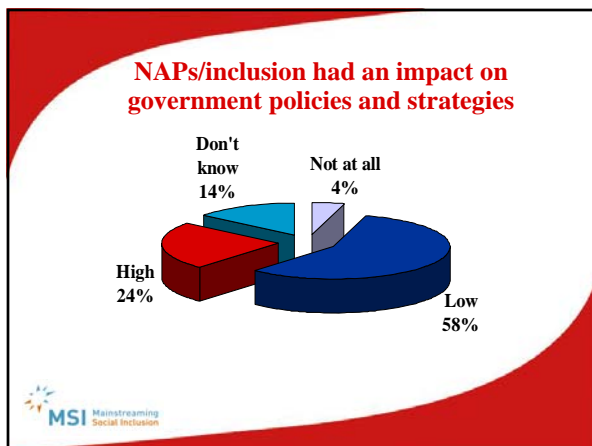
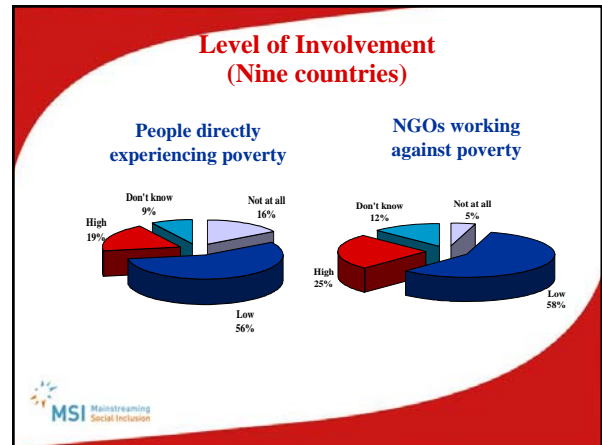
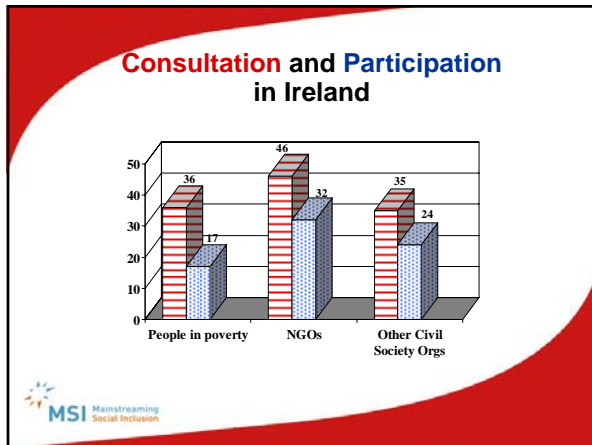
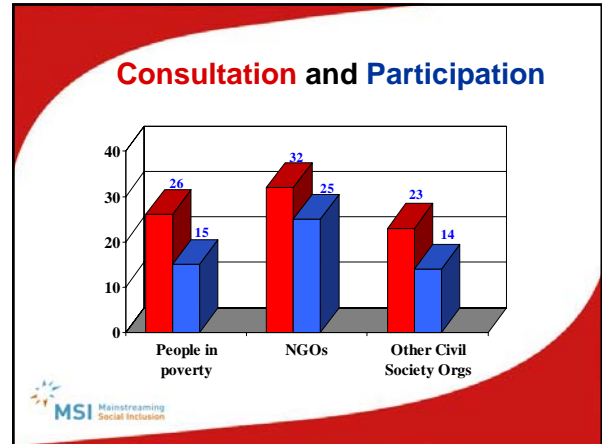
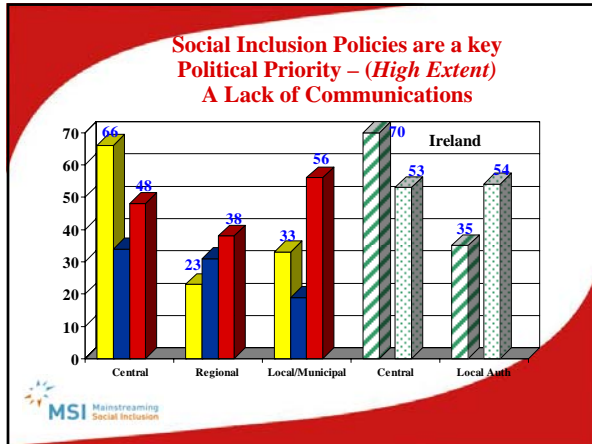


### Government policies incorporate poverty and social exclusion concerns:



### Poverty and social exclusion are Mainstreamed into Legislation :





### The MSI Scale

SECTION TITLE	MEAN	IRELAND
Political leadership and sponsorship	5.39	5.57
Government Policies	4.74	5.31
Legislation	4.46	4.58
Resources	4.56	4.75
Administrative leadership and implementation of policies against poverty and social exclusion	5.10	5.47
Capacity and skills	8.43	8.48
Structures	5.88	6.91
Data, Research and Evaluation	6.99	7.34
Engagement and participation	4.47	5.04
Mainstreaming Social Inclusion – Mean scores	5.56	5.94

### Advanced MSI in Ireland

- **Data and statistics on poverty and social exclusion have been developed at the central departmental level (9.48 out of 10)**
- **Poverty and social inclusion indicators to measure change have been developed at the central departmental level (9.04 out of 10)**
- **Poverty and social inclusion targets have been developed at the central departmental level (9.01 out of 10)**

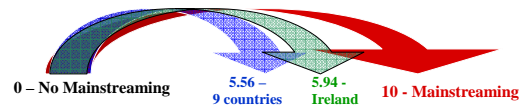


### Less advanced MSI in Ireland

- **The Government has mainstreamed poverty and social inclusion into legislation on justice and crime prevention (3.28 out of 10)**
- **The Government has mainstreamed poverty and social inclusion into legislation on transport (3.37 out of 10)**
- **Government policies on ICT incorporate poverty and social inclusion concerns (3.83 out of 10)**



### MSI Scale



### Key Results

- **The definition of MSI meets peoples’ understanding of mainstreaming social exclusion – however, there is some scepticism regarding its relevance in participating countries**
- **There was almost unanimous agreement that poverty and social exclusion issues are on governments’ agendas, but, in general this is only to a limited extent**



### Key Results

- **There is a good level of mainstreaming of social inclusion into a number of social policy areas, however, social inclusion is not mainstreamed into economic or other ‘non-social’ policy areas to any great extent**
- **There is a lack of understanding on social inclusion policies between the different levels of administration**



### Key Results

- > There is very little evaluation of social inclusion policies at each level of administration but, in particular at the regional and local levels
- > The Common Objective of the NAPs/inclusion *to mobilise all the relevant actors* in the development of social inclusion policies has, so far, been limited
- > The NAPs process has had some impact on the social inclusion policies and strategies of governments



Thank You

[www.msieurope.eu](http://www.msieurope.eu)

[www.combatpoverty.ie](http://www.combatpoverty.ie)

